




London e-Science Centre www.lesc.imperial.ac.uk

ICENI: An Integrated Grid Middleware for the e-scientist within RealityGrid



RealityGrid


Dr Steven Newhouse, Technical Director
London e-Science Centre
Department of Computing, Imperial College London

London e-Science Centre www.lesc.imperial.ac.uk

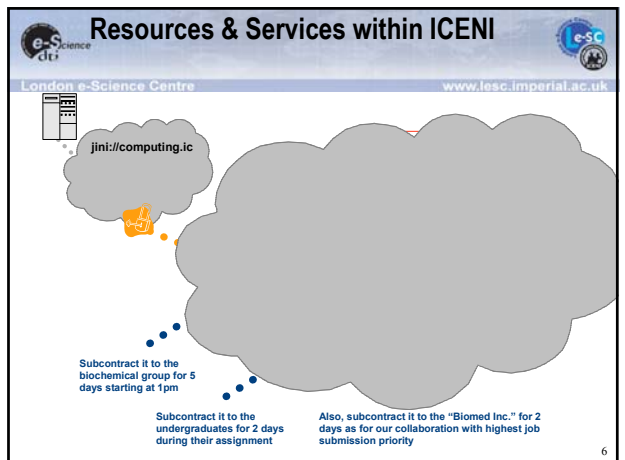
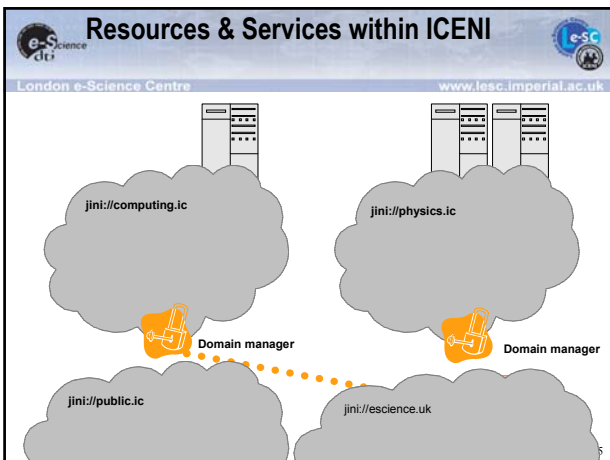
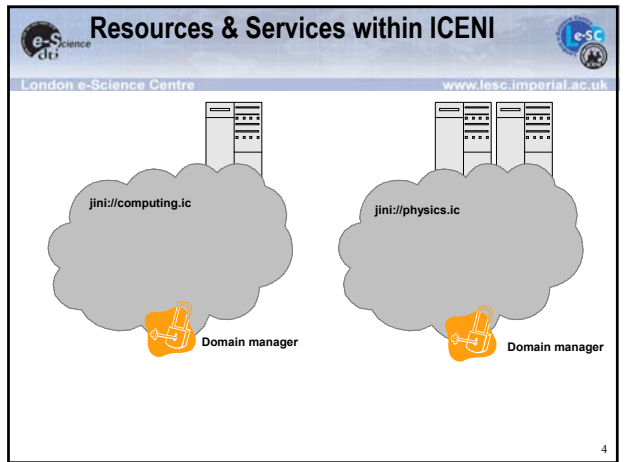
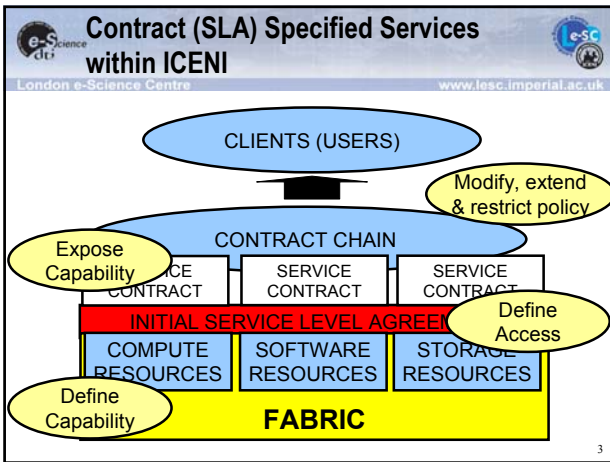
ICENI

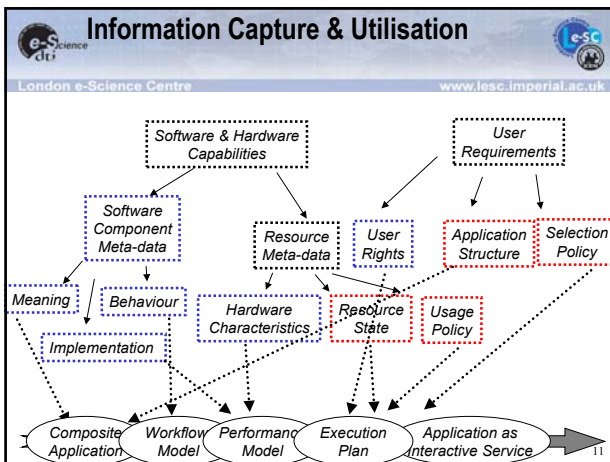
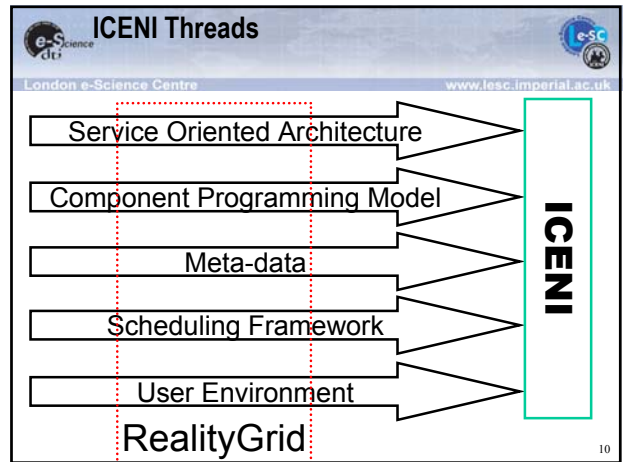
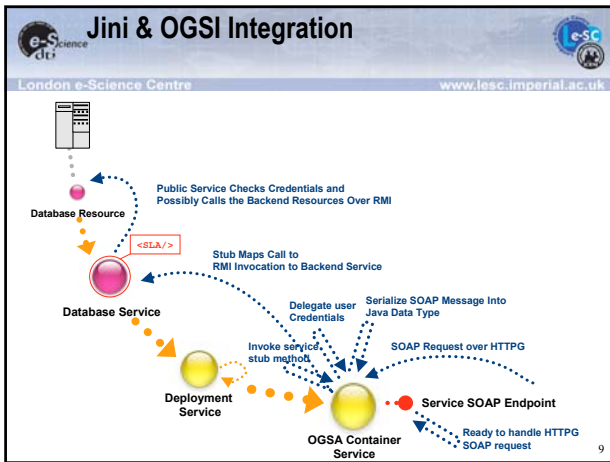
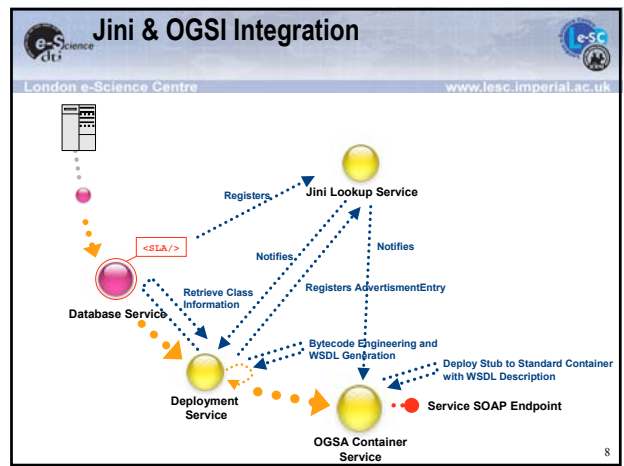
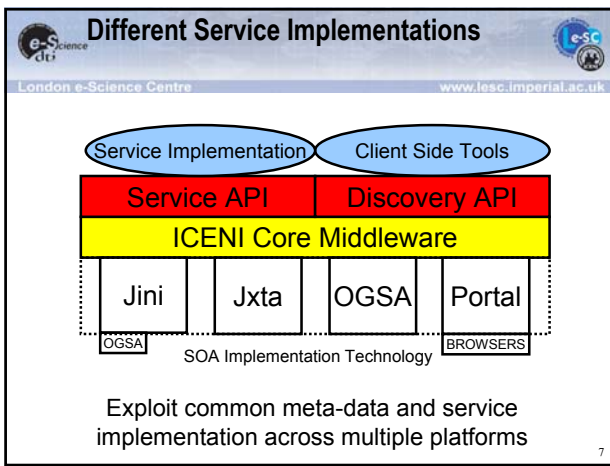
The Iceni, under Queen Boudicca, united the tribes of South-East England in a revolt against the occupying Roman forces in AD60.



- IC e-Science Networked Infrastructure
- Developed by LeSC Grid Middleware Group
- Collect and provide relevant Grid meta-data
- Use to define and develop higher-level services
- Interaction with other frameworks: OGSA, Jxta etc.

2





RealityGrid

- Augmented component programming model
- Collaborative visualisation across campus
 - Department of Aeronautics
 - Department of Computing Stereo visualisation
- Execution on remote resources through ICENI scheduler

Level 2 Grid and beyond...

London e-Science Centre www.lesc.imperial.ac.uk

OGSI Container

- ICENI Deployment across the Level 2 Grid
- All ICENI services are OGSI services
- Dynamic service deployment on demand

19

Summary

London e-Science Centre www.lesc.imperial.ac.uk

- ICENI maturing as an Integrated Grid Middleware
- Abstractions across different SOAs.
- Standard meta-data across implementations.
- Augmented component programming model
- Grid Scheduling Framework & Launchers
- Application & Infrastructure services

20

Acknowledgements

London e-Science Centre www.lesc.imperial.ac.uk

- Director: Professor John Darlington
- Technical Director: Dr Steven Newhouse
- Research Staff:
 - Anthony Mayer, Nathalie Furmento
 - Stephen McGough, James Stanton
 - Yong Xie, William Lee
 - Marko Krznaric, Murtaza Gulamali
 - Asif Saleem, Laurie Young, Gary Kong
- Support Staff:
 - Keith Sephton, Oliver Jevons, Sue Brookes
- Contact:
 - <http://www.lesc.ic.ac.uk/>
 - e-mail: lesc@ic.ac.uk

21